



FLYING
SAUCER
REVIEW

ESTABLISHED 1955

Vol. 33, No. 4
(December, 1988)

"THE CRUNCH"

MANY indications, arriving from numerous sources, suggest that a serious moment may be approaching for our world in connection with this accursed subject of the UFOs.

All of us who have been engaged in this type of investigation and speculation are by now thoroughly used to the oafish hilarity and good-natured scepticism of those pundits of the Truth — our next-door neighbour, or the average man-in-the-street.

But it could easily be that, when that "*day of the crunch*" comes, and your next-door neighbour and your man-in-the-street begin to hear the penny drop and begin to perceive that there could, after all, be some modicum of truth in what we have been saying for these forty years past, they will quit their bland and amiable mask and display an unnerving readiness to tear you limb from limb. For — so they will argue — was it not *you*, the local *ufologist*, who has brought it all on us *by talking about it*?

The warning was given of old about the stupidity of casting pearls before swine. So, on the whole, a pair of well buttoned-up lips might serve us best. In any case, experience has surely shown that it is a waste of time to attempt to discuss these matters with the average fellow-man.

DID AVEBURY UFO PRODUCE THE SILBURY HILL CORN CIRCLES?

By George Wingfield, FSR Consultant ©

It is with very great pleasure that we introduce, with this article, a new FSR Consultant, Mr George Wingfield. He holds an M. A. Honours Degree in Natural Sciences from Trinity College, Dublin, and is a Computing Systems Engineer with I.B.M., UK., Ltd. EDITOR

At first light on Friday July 15 this year drivers travelling on the A4 trunk road from Marlborough to Chippenham in Wiltshire, S.W. England, noticed an enormous imprint, like the pattern of a 'five' on dice in the wheatfield just across the road from Silbury Hill. A large central circle, about 55 ft. diameter, of wheat flattened in a clockwise swirl was surrounded symmetrically by four smaller circles, each of approximately 21 ft. diameter. Three of these had the wheat flattened in swirls that were anticlockwise, and the northerly one, which from the centre of the formation was directly towards Silbury Hill, had its wheat flattened clockwise.

Several remarkable things about this set of Circles were immediately apparent to those who have studied the Circles phenomenon. First, the size of this "Quintuple Set" was considerably larger than any previously found, with a total span of about 290 ft. Secondly, this was the first "unbalanced" Quintuple Set in that the clockwise and anticlockwise components were not symmetrical. Clearly it represented yet another stage in the evolution of the Corn Circles, which seem to be changing with an increasing momentum over the last three years. And, thirdly, and perhaps most significantly, this set of Circles had appeared right next to Silbury Hill, which is the largest and most prominent of all British prehistoric structures.

Just a mile south of Avebury Stone Circle, the famous Silbury Hill is a flat-topped conical mound, 130 ft. high, artificially constructed in elaborate layers some 4600 years ago. Its purpose is unknown but it is said that it is a node for several ley lines. It has been observed that the majority of Corn Circles occur in the vicinity of ancient sites and especially prehistoric tumuli.

In the next few days a new Quintuple Set of Circles was found at O.S. Grid Ref. SU082684, just over a

mile west near Beckhampton. This was of similar size to the first set, but with smaller (15 ft) satellites, three clockwise and one anticlockwise. On July 24 when I first visited the two sites, there were many cars stopping at Silbury Hill and their occupants were getting out to examine or to photograph the extraordinary formation in the cornfield. But very few were aware of the second quintuplet at Beckhampton.

Driving home later that evening, we discovered, due to my son Rupert's sharp-sightedness, a third huge Quintuple Set of Circles well away from the road. This formation, nearly 3 miles west of Silbury Hill at SU054678, was of similar size to the Silbury one, measuring 280 ft. across the east-west axis, and curiously had no fourth satellite circle (to the north) at all. The southern one swirled anticlockwise and 20 ft. diam., was a record 140 ft. from the 54 ft. clockwise central circle, whereas the west and east satellites (respectively clock- and anticlock-wise) were 24 ft in diameter. This set of Circles, really a quadruplet, appeared to be freshly formed and we had the impression in the fading light that we were the first to reach them.

The UFO Connection

At this stage let us turn once more to the vexing question of whether there could be any connection between these mysterious Circles and the UFO Phenomenon. Certainly there should be no suggestion that the marks in the corn are caused by the *landing* of any large connected object, or of disks. In the case of the Quintuple Set at the foot of Silbury Hill, an 11,000V power-line on wooden poles crosses the formation; these wires would certainly have been damaged by (or damaged) any craft that had landed. Enquiries to the local Electricity Board indicated that no outage or surge occurred on the night the Circles formed.

Nevertheless the idea that the Circles are caused by rotating fields of (presumably) electromagnetic energy associated with the UFO phenomenon is given substantial impetus by the following account of a most vivid UFO encounter near Silbury Hill shortly before the Circles were found. I suggest therefore that those gentlemen from BUFORA, who seem deeply prejudiced against such a connection, consider this coincidence most carefully before resorting to such fanciful notions as "stationary whirlwinds" to explain the Circles.



Miss Mary Freeman, the witness (Photo: Geo. Wingfield).

On the evening of July 13, 1988, possibly 24 hours before the Circles at Silbury Hill were formed, Mary Freeman, a young woman from Marlborough, was driving home from Winterbourne Monkton where she had had dinner with a friend. Alone in her Renault 5, she drove through Avebury on the A361 which passes through the middle of the great Stone Circle. No other cars were about. Just after leaving the A361 and entering Avebury's 'Avenue' (so-called since part of it is lined with stone menhirs) she saw an intense golden white glow in the clouds to her right. The source of the light, which, Mary said, appeared much, much brighter than the full moon (not that there was any moon that night, it being a New Moon), appeared to be enormous, and stationary, just above the base of low clouds. She glanced back at the road, slowing down, and when her eyes returned to the object, she saw that a long narrow beam of white light shone from it to the ground at an oblique angle. She remembers her immediate impression that this was an "energy beam" and she realised at once that the position where the beam met the ground must be just beyond Silbury Hill, which she could not see since high ground in that place obscures it from view.

The object which Mary drew was of an elliptical shape and from the centre of its base there shone the thin beam of light at 45 deg. to the vertical. Since it was in cloud, its edges were diffused rather than sharp, but the clouds did not appear to affect the beam. I asked whether the beam diverged downwards, which would indicate that the bright UFO was indeed the source of the light, or, if it diverged upwards which might suggest the car headlights were shining on the clouds to cause this effect. The answer was unexpected. The beam of intense white light was completely "tubular", indeed there was no way of telling whether the beam was shining down from the UFO or up from the ground to it. The idea that this could have been a car's headlights was ludicrous. The base of the

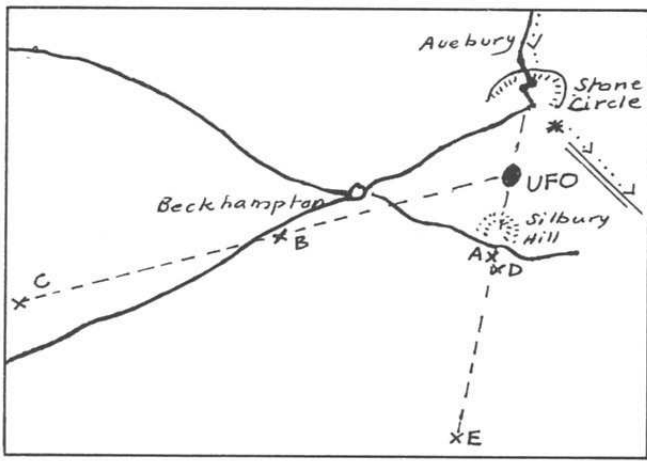


cloud through which the beam projected was not itself lit, and the beam and its apparent source, this bright object "as large as a football pitch", remained stationary and constant. Mary was not frightened; perhaps more awe-struck, and "honoured", as she put it, to witness this silent spectacle.

Mary drove on, southwards, watching the UFO, but now felt a compulsion to go to Silbury Hill over which the beam shone to its point of contact with the ground. Within seconds of this sighting there was a further odd occurrence: various objects that she had left on the Renault's front recessed shelf, such as a booklet and a cigarette pack, suddenly shot towards her, landing in her lap. There seemed no reason for this. She drove towards Silbury Hill, turning right onto the A4 road, watching the UFO all the time. But before she reached Silbury Hill her line of sight to the UFO and its beam was obscured by trees for some moments and on re-emerging there was nothing to be seen. There was still no other car on the road or other witnesses about. When the things flew off the front shelf, her eye had lit on the dashboard digital clock which then read 11.13 p.m. The whole episode had lasted barely three minutes.

The Possibility of a Hoax

Here one must reflect whether it is possible that this unusual conjunction of a detailed UFO encounter and the subsequent appearance of the Silbury group of Circles could possibly have been a hoax. Colin Andrews and Busty Taylor of the Circles Investigation Group expressed grave reservations over one aspect of all the Quintuple Sets of Circles near Silbury Hill and Beckhampton. This was that in each set were found very narrow tracks along the seed-line of the corn, usually connecting the satellite circles with the central one. These appeared surreptitiously made, and in places a small shoe-print (as of a child or woman) was visible. These were seen by the investigators even when they inspected an ostensibly unvisited Circle. Then, of course, one can never be certain that one is the first on the scene, since one can never be sure of the exact time that a Circle was formed. Certainly their impression was that these marks must have been



- A** First Silbury Hill Quintuple.
- B** Beckhampton Quintuple.
- C** 'Rupert's Quintuple'.
- D** Second Silbury Hill Quintuple.
- E** Allington Down Quintuple.
- ... , ... , Miss Freeman's route.
- * Spot where Miss. F. first perceived UFO.

made when the Circles were formed (for some were actually under the flattened wheat), which suggested that a hoax could have been perpetrated.

But nevertheless the way in which the wheat was laid flat with a distinct "veining" effect and the shape of the swirl indicated these were classic Circles, with a fine structure that would be extremely difficult if not impossible to hoax. Besides, local talk gave no suggestion of a hoax, and, as I found myself, the local constabulary are sufficiently watchful to question anyone they see hanging about near the Silbury Hill at 1 a.m.

So a further conundrum was posed: Does the formation of these large Quintuple Circles require human involvement (in a manner at which we may only speculate)? If so, we should not, perhaps, be thinking in terms of our preconceived idea of a hoaxer: the mischief-maker and his chums who have hoaxed the odd Circle in previous years, using a post and chain, and whose clumsy efforts were certainly recognisable as a hoax. Here we are talking of people whose methods and motives are far more obscure and quite possibly sinister. *Alternatively one could speculate that the "shoeprints" were not of human origin at all.*

If there was a possibility that the Circles were fake, then it would be logical to suppose that the Avebury UFO story was also a fake, hatched by whoever was doing the hoaxing. This story had appeared in the *Marlborough Times* of July 22nd, under the headline "Strange Sighting at Silbury Hill". Mary Freeman was not named in the brief account of her UFO experience, but it was not difficult to ascertain her name and some time later Colin Andrews and I went to interview her. Until we met Mary a hoax had always seemed a possibility, but, when we did, we both felt sure that this was not the case.

The Plot Thickens

On July 26, to everyone's amazement, a further perfect Quintuple Set of Circles was seen to have formed in the wheatfield opposite Silbury Hill, immediately adjacent to the first set and of equal size. This set was oriented with its satellites roughly to the NE, NW, SW, SE, this last being the only clockwise one; that is at 135 deg. to the original set. From the top of Silbury Hill it now appeared that the Celestial Dice Player

The first Silbury Hill Quintuple
(Photo: R. W. Vaughan July 18, 1988)





Above: Circle at Silbury Hill, July 24, 1988
(Photo: Geo. Wingfield).



Left: Silbury Hill, Quintuples.
(Photo: Geo. Wingfield August 1988).

had rolled the dice again and had now scored a pair of fives.

Again, on July 29, the *Marlborough Times* led with a story by reporter Richard Martin: "Circles Mystery Intensified by Further Sighting". This, in fact, referred to the new Circles rather than to the sighting of a second UFO. And, as if that was not enough, a further three Circles of approx. 20 ft. diam. appeared in seemingly random positions on either side of these two main quintuplets in the same field during the next few days.

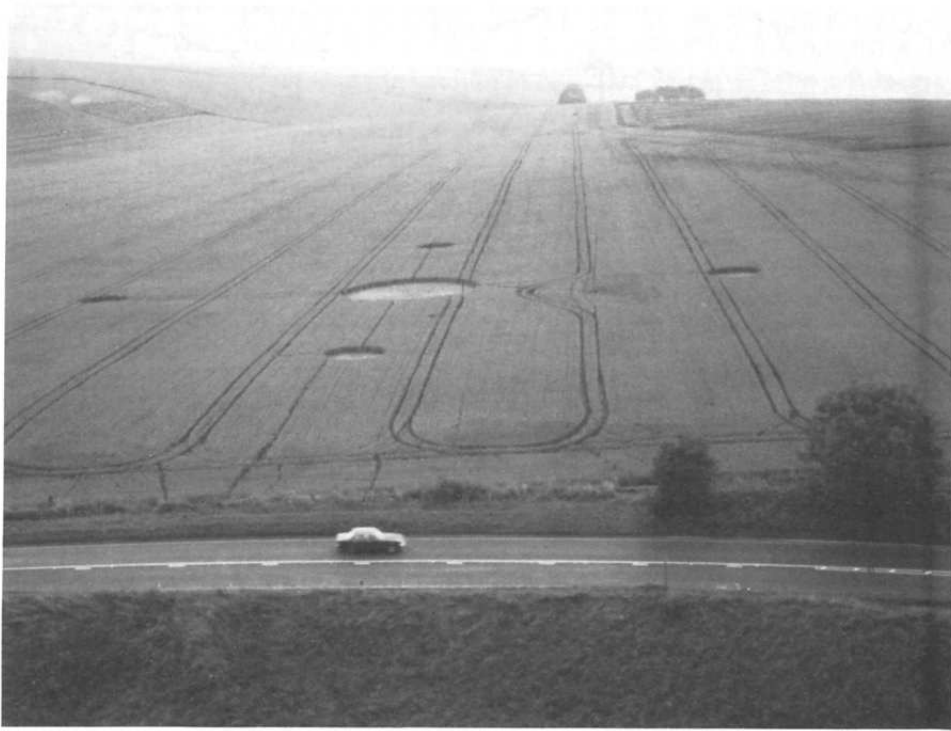
Colin Andrews went to Silbury Hill with local dowser Brian Ashley and the results, recorded on video, were remarkable. Mr Ashley's dowsing rods moved vigorously in and near the Circles, in each case in the direction of swirl which varies with distance from the centre. These results were entirely consistent with experiments Colin had supervised in the Hampshire Circles, and the movement when in the standing corn, was in the direction that only Colin could have predicted in advance. At times the rods twisted "like the blades of a helicopter".

On the night of August 3 a friend and I spent the hours of darkness on Silbury Hill, equipped with a large infra-red night-sight device. Through this the thirteen Circles in the field below were clearly visible

even during the darkest part of the night. We saw nothing unusual and we did not observe any nocturnal visitors to the Circles. Only a few days later did we discover that a new large Quintuple Set had been discovered in wheat at SU097663 near Allington Down on August 4, just a mile and a half to the south. This quintuplet had a large central Circle, swirled clockwise like the previous ones, but adjacent pairs of anticlockwise and clockwise satellites. It is likely that it formed on that night.

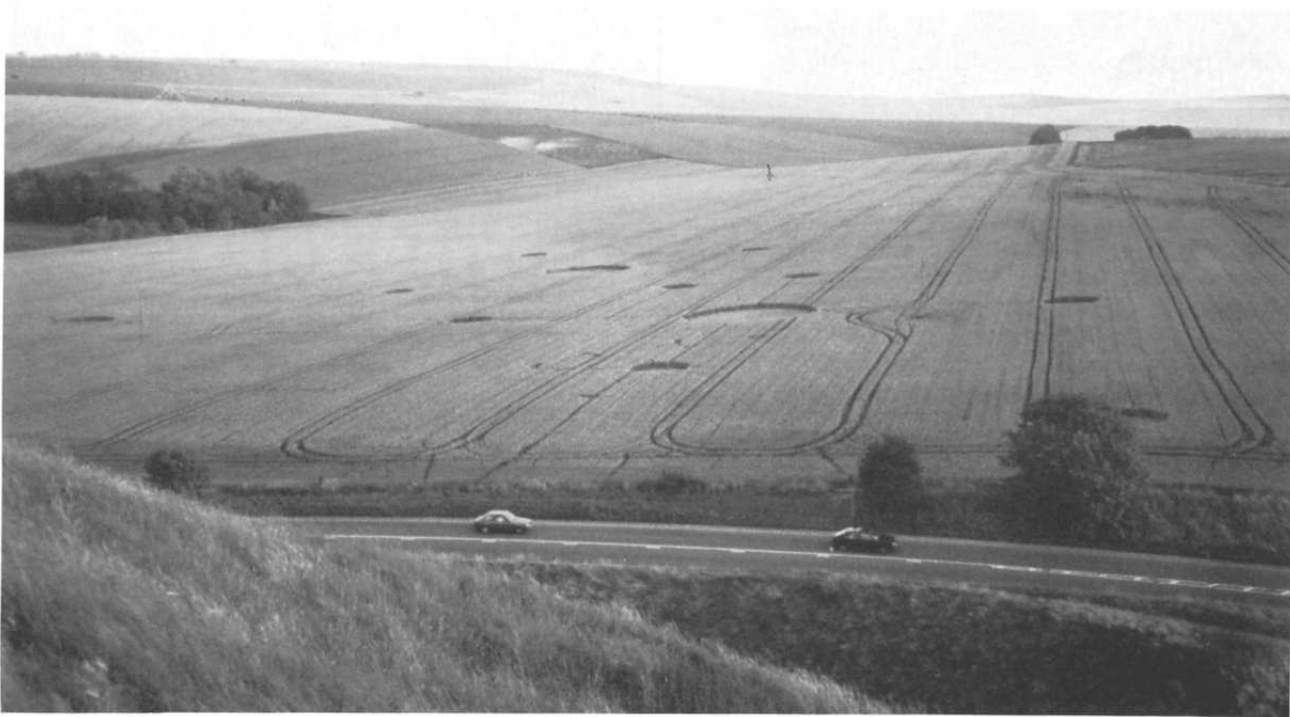
Conclusions

The *Marlborough Times* and people we talked to locally did not think that these Circles could have been hoaxed. Nor for that matter did a single person express belief in the quite absurd explanation that these Circles were caused by "meteorological" effects; just one glance from the top of Silbury Hill at the neat and elaborate pattern of the 13 Circles below was enough to dispel that idea! Despite the disquieting business of the shoeprints, there were all sorts of other factors, including the dowser's reactions, that indicated that the Circles were genuine. And, as for Mary Freeman's story, surely a hoaxer would have ensured that the sighting coincided with the assumed time of



**Left: Silbury Hill, First Quintuple
(Photo: Geo. Wingfield
July 24, 1988).**

**Below: Silbury Hill First and
Second Quintuples
(Photo; Geo. Wingfield
August 12, 1988).**



the first Silbury Hill Circles' formation. But had the Circles formed on the Wednesday night when Mary said she saw the UFO, there is no way that they could have escaped notice on the Thursday, since their position lay right beside the busy A4 road.

After her UFO encounter, which obviously had a deep emotional effect on Mary, she returned home by midnight (no suggestion of "missing time" here), and told her flatmates, (whom I met and talked to), and, later, her mother and her brother, what she had seen. It was not until perhaps six days later that she was told by Richard Martin, whom she knows, about the Circles at Silbury Hill. Only then did both realise that the events were very likely connected.

I have no hesitation in saying that I found Mary Freeman an intelligent and articulate witness and that neither Colin Andrews nor myself found any reason to doubt her veracity. The fact that at least 24 hours must have elapsed between her sighting and the formation of the first Circles at Silbury Hill is not necess-

arily a difficulty. Indeed, there are now grounds for thinking that the energy which causes Circles builds up in the ground to a point where the event occurs, and when it does, it happens very quickly indeed; say, within 10-15 seconds. Whether the UFO initiated such a process, or whether the UFO seen by Mary was some kind of "earthlight" projected upwards from the ground by this mysterious process is a matter that must be carefully considered. There do seem indications that whatever is happening is under some form of intelligent control. But by whom or by what? And for what purpose?

The UFO's approximate position, indicated by Mary just south of Avebury, from which the beam shone down (or up), was at SU102692. To ufologists it may come as no surprise to learn that straight lines drawn through, firstly, the two Quintuple Sets near Beckhampton (whose positions are given above) and, secondly, through the mean position of the two Quintuple Sets at Silbury Hill (SU100683) and the position

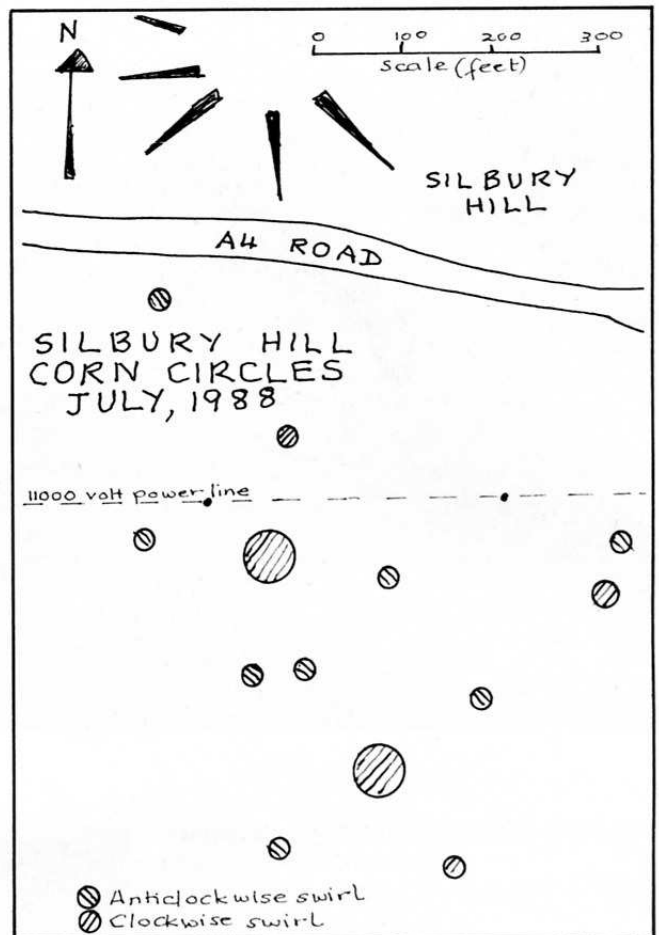
of that on Allington Down, intersect at this point. This is something that Mary Freeman could hardly have known, since very few people were aware of the positions of Circles other than of those at Silbury Hill. Moreover, the second line running to Allington Down coincides exactly with a major ley line, which goes through Avebury, Silbury Hill and the site of a Stone Circle (at SU098671) which has now vanished. The first line is close to the position of a major ley line running from Avebury to Glastonbury Tor.

Whether the connection of the Circles with ley lines is relevant or not, we may one day discover. The connection of the Circles with the whole subtle and complex UFO Phenomenon should be by now beyond reasonable doubt. It may not be satisfactory to explain one mystery with another mystery, but currently there is simply no other satisfactory approach that even begins to account for this mysterious phenomenon. Nevertheless, in asserting this, I do not attempt to adduce any evidence for or against the extraterrestrial origin of UFOs. That is a separate issue.

Meanwhile, on August 16, news came that a large Quintuple Set of Circles had appeared in a field north of Hungerford, some 15 miles east of Silbury Hill. At the time of writing the wheat has already been cut and harvested and there is little left of the 1988 Circles which can be seen. Soon these fields near Silbury Hill will go under the plough. No doubt the summer of 1989 will bring even more surprises, for it appears that the saga of the Corn Circles will run and run.

G.W.

September 1988



THE DEMON WHO ADMITTED IT! A CLOSE ENCOUNTER IN FRANCE IN 1987

Report by Denise Lacanal and Théodore Revel (Groupement Midi-Pyrénées).

(Translation from French)

We give below our translation of this highly interesting case which appeared in LUMIERES DANS LA NUIT No. 291-292 (September-October 1988), now under the able guidance of Monsieur Joël Mesnard whose name is well known to FSR readers of some years ago, as we had a lot of very good reports by him. We take this opportunity to offer our warmest congratulations to Monsieur Mesnard, and we remain sure that LDLN will continue to prosper under him. We know that, in common with all other UFO investigation journals in Europe and the USA, LDLN have been urged by our detractors to provide no collaboration with FSR or make any reference to our existence, but we shall continue with the policy which we have always held, right from the establishment of LDLN, which has been to give all possible support and all possible publicity to this excellent French journal, published in a country for which we all harbour the greatest regard and esteem!

EDITOR

THIS extraordinary affair occurred at about 10.50 a.m. (9.50 a.m. Greenwich Time) on December 12, 1987 at a small place called Malvési situated some 3 kms. to the north of Narbonne in the far south of France. (43° 11 N., 03° 00 E.), on an open level tract of ground flanked by hills and close to the Malvési uranium-treatment plant. The weather was rainy and misty, with low cloud cover. (A Perpignan newspaper *L'Indépendant* of December 20, 1987, carried a report of the case, with a photo of the witness at the site.)

The eyewitness, a married man named G— L—, aged 40, who has one daughter aged 16, struck us, when we interviewed him, as totally balanced, sensible and trustworthy, and apparently in no way traumatized by his extraordinary experience. Formerly owner of a restaurant, he is a musical composer.

His account was given to us with great clarity and in tones conveying unmistakable sincerity. He had no objection whatever to the publication of his name, but in view of the strange nature of this case, we have thought it better not to reveal his name, but are keeping it on file, and we shall simply call him G— L—.

His Account

"I had gone to Malvési to gather some firewood, as I often do, in order to grill a meal. I had parked my car near the old demolished factory buildings and was heading towards the building rubble, hoping to find there some beams or planking. I had not gone more

(continued on Page 20)